

Product Information

FIDISCOIN - Disco Ball Insert

BS EN 1176 - Designed to British & European Standards


MATERIALS

Insert - Two Colour  High Density Polyethylene (HDPE)

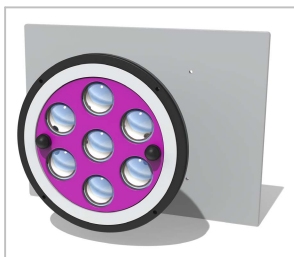
SUPPLY METHOD

Insert - Fully assembled

FEATURES

 **ROTATE** - 360° Rotating disco wheel

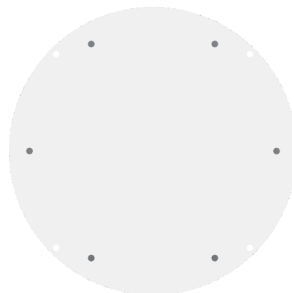
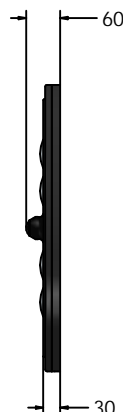
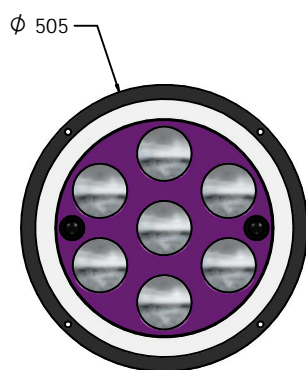
 **VISUAL** - Mirrored polycarbonate domes



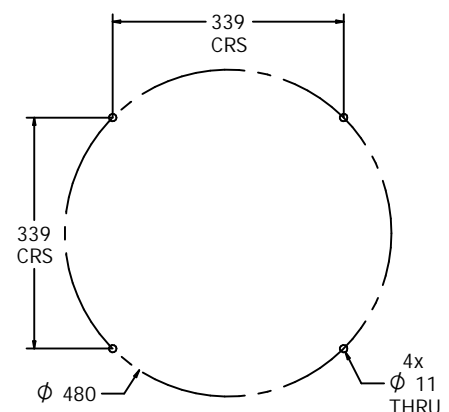
Insert can easily attach
to your own panel



DIMENSIONS



Host panel fixing detail



CAD available on request

TECHNICAL

Age Range: 2+ Years
Largest Part: FIDISCOIN - $\phi 505 \times 60$ mm
Total Weight: FIDISCOIN - 4.3 Kg
Surfacing: N/A

IMPORTANT: you must specify the colour option you require at the time of order if it is different from the colour listed/shown above, requirements are subject to availability at the time of order

Fahr Industries Ltd
Spitfire Road, Old Sarum,
Salisbury, Wiltshire, SP4 6GB, UK

© 2025 Fahr Industries Ltd
These designs and content belong to Fahr Industries Ltd and are not to
be reproduced in any way or by any means without written permission

Tel: +44 (0)1722 349793
Email: sales@fahr-industries.com
Web: www.fahr-industries.com