

# Product Information

## FIMUTONGCIN - Tongue Drum Circular Musical Insert

**BS EN 1176** - Designed to British & European Standards

### MATERIALS

**Panel** - Two Colour **XDeco** High Density Polyethylene (HDPE)

**Tongue Drum** - Stainless steel with brushed finish

### SUPPLY METHOD

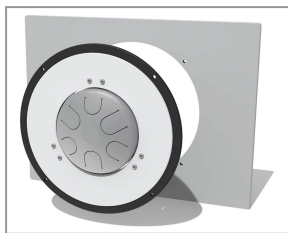
**Insert** - Fully assembled



**MUSICAL** - Oriental tones played by hand

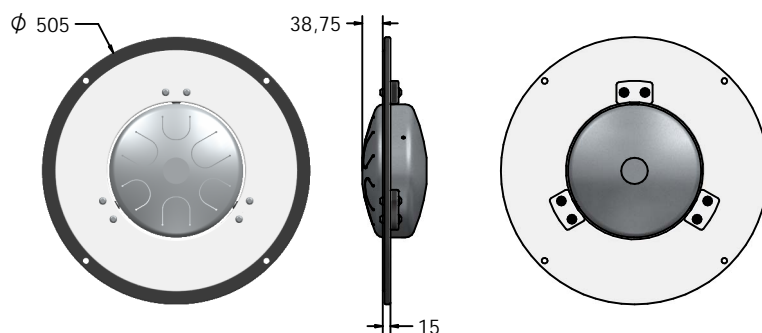


**CO-ORDINATION** - Develops hand eye co-ordination

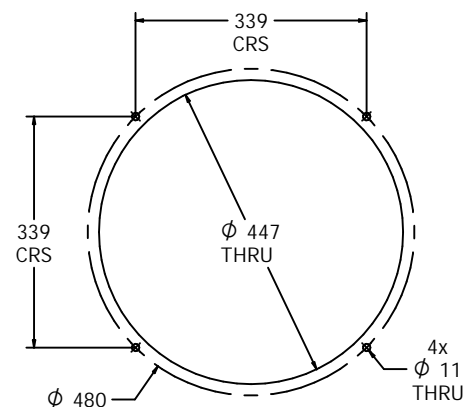


Insert can easily attach  
to your own panel

### DIMENSIONS



### Host panel fixing detail



CAD available on request

### TECHNICAL

**Age Range:** 2+ Years  
**Largest Part:**  $\phi 505 \times 122\text{mm}$   
**Total Weight:** 5.5Kg  
**Surfacing:** N/A

IMPORTANT: you must specify the colour option you require at the time of order if it is different from the colour listed/shown above, requirements are subject to availability at the time of order

**Fahr Industries Ltd**  
Spitfire Road, Old Sarum,  
Salisbury, Wiltshire, SP4 6GB, UK

© 2025 Fahr Industries Ltd  
These designs and content belong to Fahr Industries Ltd and are not to  
be reproduced in any way or by any means without written permission

**Tel:** +44 (0)1722 349793  
**Email:** sales@fahr-industries.com  
**Web:** www.fahr-industries.com