


# Product Information

## FIMUMWLIN - Large Melody Wheel Musical Insert

**BS EN 1176** - Designed to British & European Standards

### MATERIALS

**Panel** - Two Colour  High Density Polyethylene(HDPE)

**Melody Wheel** - High Density Polyethylene (HDPE)

### SUPPLY METHOD

**Insert** - Fully assembled

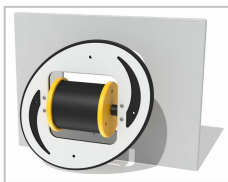
### FEATURES



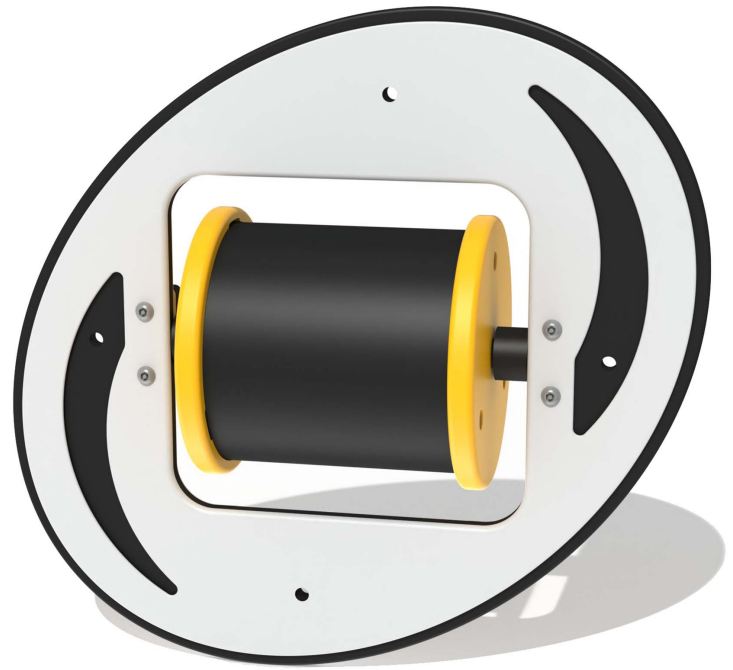
**MUSICAL** - Hidden cam strikes chimes inside



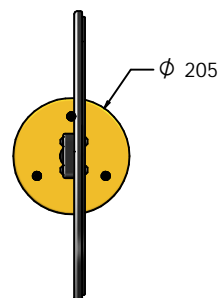
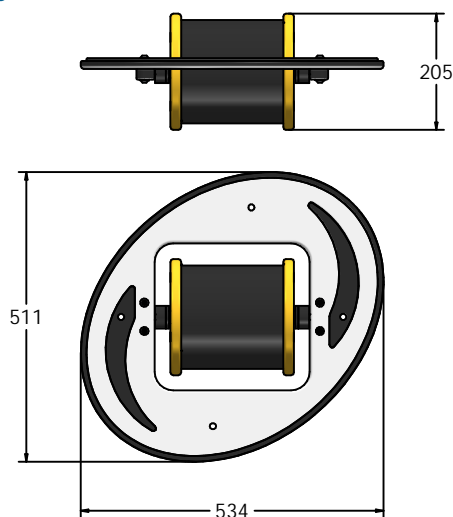
**ROTATE** - Spin at various speeds



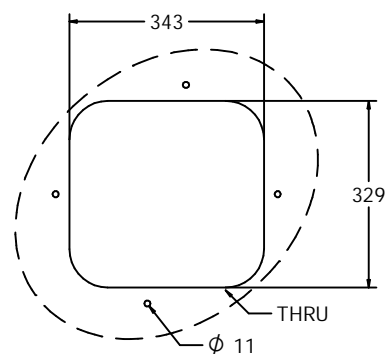
Insert can easily attach  
to your own panel



### DIMENSIONS



### Host panel fixing detail



CAD available on request

### TECHNICAL

**Age Range:** 2+ Years  
**Largest Part:** 534 x 511 x 205mm  
**Total Weight:** 5kg Approx  
**Surfacing:** N/A

IMPORTANT: you must specify the colour option you require at the time of order if it is different from the colour listed/shown above, requirements are subject to availability at the time of order

**Fahr Industries Ltd**  
Spitfire Road, Old Sarum,  
Salisbury, Wiltshire, SP4 6GB, UK

© 2025 Fahr Industries Ltd  
These designs and content belong to Fahr Industries Ltd and are not to  
be reproduced in any way or by any means without written permission

Tel: +44 (0)1722 349793  
Email: [sales@fahr-industries.com](mailto:sales@fahr-industries.com)  
Web: [www.fahr-industries.com](http://www.fahr-industries.com)